

## Analysis of school results 2008-13

The attached charts show trends of school results over the period 2008-13 for Primary Schools and 2008-12 for Secondary Schools, for which the 2013 results have yet to be published.

Three indicators are shown per school per year; for boys, girls and total:

- Number of pupils entered for exams
- Average result achieved
- Number of pupils achieving the qualifying score for the next level of education

Not all data is available - in some cases year and/or gender data is missing with only totals available.

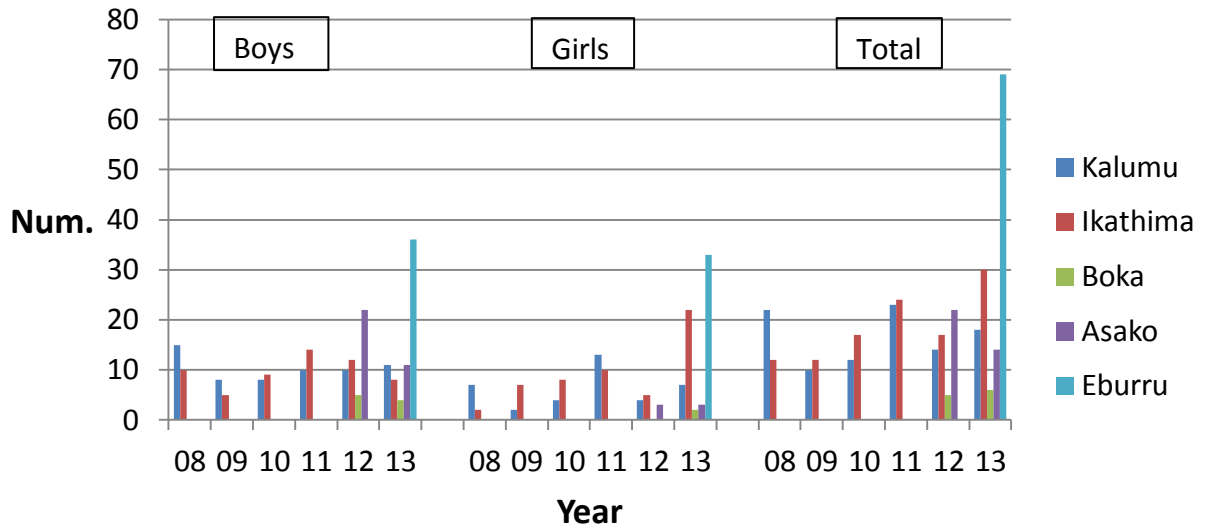
### Primary Results

- Eburru is by far the largest number of exam entrants at 69 followed by Ikathima at 30 and Kalumu at 18.
- Kalumu however has the best average score at 271, well above 250 which is the level required to enter secondary school. The other schools are clustered around 200.
- Eburru leads the number achieving the secondary qualification level with 16 pupils followed by Kalumu at 13, an excellent three quarters of its pupils achieving this in 2013.
- Of the two smaller schools, Asako has shown steady improvement in number of entries and success in exams but Boca remains small.

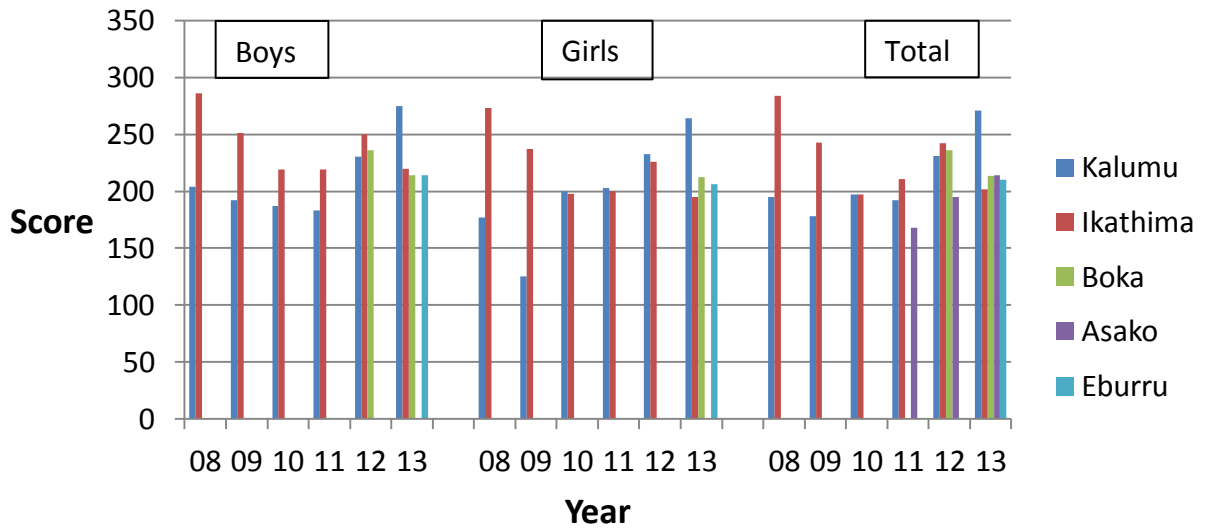
### Secondary Results

- Madogo has by far the largest number of exam entries at 149 with the other schools clustered around 50. The fastest growth has been for boys.
- Eburru has consistently improved performance and is now clearly the most successful school with a mean score in 2012 close to 7 with the others clustered around 3-4.
- As a consequence, Eburru dominates the number of pupils achieving the score required to qualify for university entrance, with over half its pupils achieving this in 2012. The other schools are in single figures for university qualifications with Madogo declining to a very poor result in 2012. Usueni by contrast is steadily improving.

## Primary Entries



## Primary - Average Results



## Primary to Secondary

